

CORTECS UPLC and CORTECS Premier 1.6 μm Columns

CONTENTS

I. INTRODUCTION

II. GETTING STARTED

- a. eCord Installation
- b. Column Installation
- c. Column Equilibration
- d. Initial Column Efficiency Determination
- e. Column QR Code
- f. VanGuard Pre-Columns
- g. VanGuard FIT Cartridges

III. COLUMN USE

- a. Sample Preparation
- b. pH Range
- c. Solvents
- d. Pressure
- e. Temperature

IV. COLUMN CLEANING, REGENERATING, AND STORAGE

- a. Cleaning and Regeneration
- b. Storage

V. ECORD INTELLIGENT CHIP TECHNOLOGY

- a. Introduction
- b. Installation
- c. Manufacturing Information
- d. Column Use Information

VI. ADDITIONAL INFORMATION

- a. Tips for Maximizing CORTECS Column Lifetimes
- b. Getting Started with CORTECS HILIC Columns

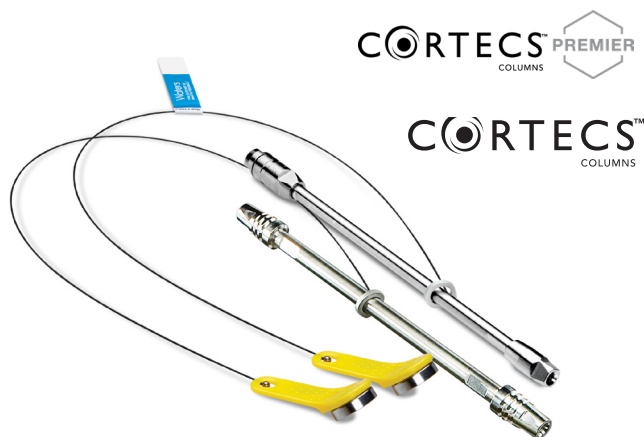
VII. CAUTIONARY NOTE

I. INTRODUCTION

Thank you for choosing a Waters™ CORTECS™ UPLC™ and/or CORTECS Premier 1.6 μm Column. The CORTECS packing materials were designed specifically for use with the ACQUITY™ UPLC and ACQUITY Premier Systems are manufactured in a cGMP, ISO 9001 certified plant using ultra pure reagents. Each batch of CORTECS packing material is tested chromatographically with acidic, basic, and neutral analytes and the results are held to narrow specification ranges to assure excellent, reproducible performance. Every column is individually tested and a Performance Chromatogram and Certificate of Batch Analysis are provided on the eCord™ Intelligent Chip.

The CORTECS Premier Column is offered with or without a VanGuard™ Fully-Integrated Technology [FIT] Cartridge. To address the desire to extend the operating lifetimes of analytical columns, the VanGuard FIT Cartridge is designed to prevent the non-desired introduction of sample matrix or particulates onto the column without degrading the separation. It can be easily replaced to restore separation performance and extend the analytical column's lifetime.

In addition, the CORTECS Premier Columns utilize MaxPeak™ High Performance Surfaces, an innovative technology designed to increase analyte recovery, sensitivity, and reproducibility by minimizing analyte/surface interactions that can lead to sample losses.



II. GETTING STARTED

With each CORTECS Column, a Certificate of Analysis and Performance Test Chromatogram are available in the column box or on the column's eCord Intelligent Chip. The Certificate of Analysis is specific to each batch of packing material and includes the batch number, analysis of unbonded particles, analysis of bonded particles, and chromatographic results and conditions. The Performance Test Chromatogram is specific to each individual column and contains the batch number, column serial number, USP tangent efficiency, USP tailing factor, retention factor, and chromatographic conditions. These data should be stored for future reference. For those not able to access the information on the eCord Intelligent Chip, the Certificate of Analysis and Performance Test Chromatogram are available on request at waters.com/coa.

a. eCord Installation

(May not be available for all column configurations)

The eCord Intelligent Chip button is designed for use on the ACQUITY UPLC, ACQUITY Premier, Arc™ Premier, and ACQUITY Arc Systems and it should be attached to the side of the instruments' column heater module. The eCord button is magnetized and does not require specific orientation. For more information on eCord Intelligent Chip functionality, see Section V in this care and use manual.

b. Column Installation

(with or without a VanGuard FIT Cartridge)

Note: Prior to handling CORTECS Columns and any chemical, consult with your safety department and/or local regulations on the use of proper protective equipment.

The CORTECS Columns are shipped in 100% acetonitrile. The flow rates given in the procedure below are for 2.1 mm I.D. columns.

1. Purge the pumping system of any buffer-containing mobile phases and connect the inlet end of the column to the injector outlet.
2. Flush column with 100% organic mobile phase (methanol or acetonitrile) by setting the pump flow rate to 0.1 mL/min and increase the flow rate to 0.5 mL/min over five minutes.
3. When the mobile phase is flowing freely from the column outlet, stop the flow and attach the column outlet to the detector. This prevents entry of air into the detection system.
4. Gradually increase the flow rate as described in Step 2.
5. Once a steady backpressure and baseline have been achieved, proceed to the next section.

c. Column Equilibration

It is important to ensure mobile-phase compatibility before changing to a different mobile-phase system. Equilibrate the column with a minimum of 10-column volumes of the mobile phase to be used (see Table 1 for a list of column volumes). The column may be considered thermally equilibrated once a constant backpressure is achieved.

**Table 1. Empty Column Volumes in mL
(multiply by 10 for flush solvent volumes)**

Column Length (mm)	Internal Diameter		
	1.0 mm	2.1 mm	3.0 mm
30	–	0.1	0.2
50	0.04	0.2	0.4
100	0.08	0.4	0.8
150	0.12	0.5	1.0

To avoid precipitating mobile-phase buffers on your column or in your system, flush the column with five column volumes of a water/organic solvent mixture, using the same or lower solvent content as in the desired buffered mobile phase. (For example, flush the column and system with 60% methanol in water prior to introducing 60% methanol/40% buffer mobile-phase.)

For columns packed with CORTECS HILIC material, flush with 50-column volumes of 50:50 acetonitrile:water with 10 mM final buffer concentration. Prior to the first injection, equilibrate with 20-column volumes of initial mobile phase conditions (see Table 1 for a list of column volumes). See "Getting Started with CORTECS HILIC Columns" for additional information.

d. Initial Column Efficiency Determination

1. Perform an efficiency test on the column before using it. This test may consist of:
 - a. An analyte test mixture that is commonly used in your laboratory, and/or
 - b. The analyte mixture as found on the "Performance Test Chromatogram" that accompanied your column.

Note: If (b) is performed, the isocratic efficiencies measured in your laboratory may be less than those given on the Waters "Performance Test Chromatogram." This is normal. The Waters isocratic column testing systems have been modified to achieve extremely low system volumes. This presents a more challenging test of how well the column was packed, and guarantees the highest quality packed column. These special testing systems have been modified to such an extent that they are not commercially viable and have limited method flexibility other than isocratic column testing.

- Determine the number of theoretical plates (N) and use this value for periodic comparisons.
- Repeat the test at predetermined intervals to track column performance over time. Slight variations may be observed due to differences in the quality of the connections, operating environment, system electronics, reagent quality, column condition, and operator technique.

e. Column QR Code

The quick reference (QR) code that is located on the column label provides column-specific information (i.e., the part and serial numbers that are unique identifiers for the column), and its encoding follows a widely adopted industry-standard.

- Scan QR code using any device that is capable of scanning QR codes (i.e., for smart phones and tablets, use the built-in camera app).
- Be directed to the column's information hub on waters.com.
- Access technical and scientific information for the column (i.e., certificate of analysis, application notes).

f. VanGuard Pre-Columns

VanGuard Pre-Columns are designed specifically for CORTECS UPLC Columns and for the use in the ACQUITY UPLC and ACQUITY Premier Systems.

These 2.1 mm I.D. x 5 mm length guard column devices are packed with the same UPLC chemistries and frits as the Waters 2.1 mm I.D. UPLC columns. The VanGuard Pre-Columns attach directly to the inlet side of a CORTECS UPLC Column.

Note: In order to ensure void-free and leak-free connections, the VanGuard Pre-column is shipped with the collet and ferrule NOT permanently attached. Care must be taken when removing the O-ring that holds these two pieces on the pre-column tubing.

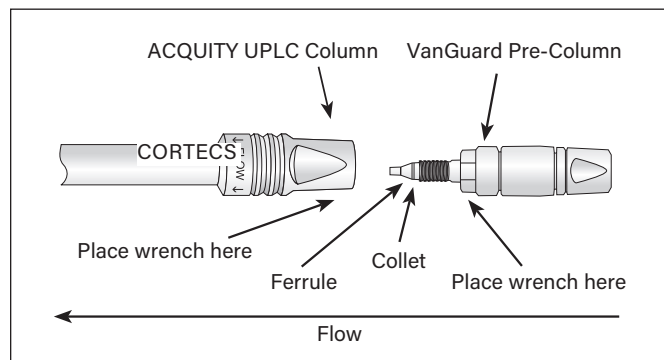


Figure 1. VanGuard Pre-Column installation diagram.

Installation Instructions

- Remove VanGuard Pre-column from box and shipping tube and remove plastic plug.
- Orient pre-column so that male end is facing up and carefully remove rubber O-ring that holds collet and ferrule in place during shipping (collet and ferrule are not yet permanently attached).
- Orient CORTECS UPLC Column perpendicular to work surface so that column inlet is on the bottom (column outlet on top).
- From below, insert VanGuard Pre-column into CORTECS UPLC Column inlet and hand-tighten (collet and ferrule are not yet permanently attached).
- While pushing the VanGuard Pre-column into the column inlet, turn assembled column and pre-column 180° so that pre-column is now on top.
- Tighten with two 5/16" wrenches placed onto CORTECS UPLC Column flats and VanGuard Pre-column hex nut (male end) as shown above.
- Tighten 1/4 turn to set collet and ferrule.
- Check that ferrule is set by loosening connection and inspecting the ferrule depth. A properly set ferrule depth will resemble other connections in the ACQUITY UPLC and/or ACQUITY Premier System.
- Reattach pre-column, apply mobile-phase flow, and inspect for leaks.

g. VanGuard FIT Cartridges

The VanGuard FIT Cartridge is designed specifically for CORTECS Premier Columns.

For the CORTECS Premier Columns that have a VanGuard FIT Cartridge, the VanGuard FIT Cartridge may be replaced using two 3/8" wrenches. Simply apply the wrenches to the flats on the guard and column end nut and turn in a counter clockwise direction (see Figure 1). This will allow the VanGuard FIT Cartridge to be removed and appropriately discarded when following good laboratory practices.

A new VanGuard FIT Cartridge can now be used to replace the discarded one. Hand-tighten the new cartridge in a clockwise direction, then tighten using two 3/8" wrenches. Proper sealing should not require more than a 1/4 turn past the hand-tightened position.

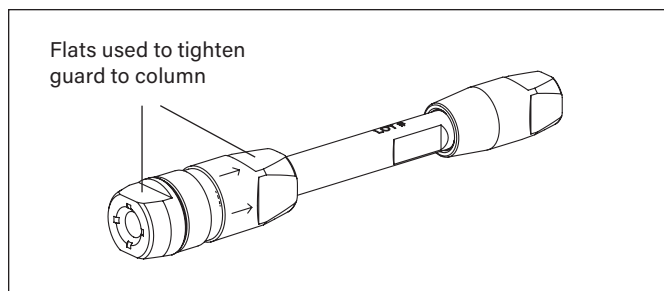


Figure 2. Recommended 3/8" wrench placement to remove the VanGuard FIT Cartridge from the CORTECS Premier VanGuard FIT Column.

III. COLUMN USE

To ensure the continued high performance of CORTECS Columns, follow these guidelines:

a. Sample Preparation

1. Sample impurities often contribute to column contamination. One option to avoid this is to use Waters Oasis™ Solid-phase Extraction Cartridges/Columns or Sep-Pak™ Cartridges of the appropriate chemistry to clean up the sample before analysis. For more information, visit waters.com/sampleprep.
2. It is preferable to prepare the sample in the operating mobile phase or a mobile phase that is weaker than the mobile phase for the best peak shape and sensitivity. Acetone should not be used as a sample solvent/diluent unless a Hexane Tetrahydrofuran Compatibility Kit has been installed.
3. If the sample is not dissolved in the mobile phase, ensure that the sample, solvent, and mobile phases are miscible in order to avoid sample and/or buffer precipitation.
4. Filter sample with 0.2 μm membranes to remove particulates. If the sample is dissolved in a solvent that contains an organic modifier (e.g., acetonitrile, methanol, etc.) ensure that the membrane material does not dissolve in the solvent. Contact the membrane manufacturer with solvent compatibility questions. Alternatively, centrifugation for 20 minutes at 8000 rpm, followed by the transfer of the supernatant liquid to an appropriate vial, could be considered.
5. For Hydrophilic Interaction Chromatography (HILIC) separations, the samples must be prepared in a high percentage of organic solvents (e.g., 95% acetonitrile). See "Getting Started with CORTECS HILIC Columns" section for additional information.

b. pH Range

Table 3 list the recommended operating pH ranges for the various CORTECS chemistries. A listing of commonly used buffers and additives is given in Table 2. Additionally, the column lifetime will vary depending upon the operating temperature, the type, and concentration of buffer used. For example, the use of phosphate buffer at pH 8 in combination with elevated temperatures will lead to shorter column lifetimes.

c. Solvents

To maintain maximum column performance, use high quality chromatography grade solvents. Filter all aqueous buffers prior to use through a 0.2 μm filter. Pall Gelman Laboratory Acrodisc® filters are recommended. Solvents containing suspended particulate materials will generally clog the outside surface of the inlet distribution frit of the column. This will result in higher operating pressure and poorer performance. See Section VI for more information.

d. Pressure

CORTECS 1.6 μm Columns can tolerate operating pressures up to 18000 psi (1241 bar or 124 MPa).

Note: Working at the extremes of pressure, pH and/or temperature will result in shorter column lifetimes.

e. Temperature

Temperatures between 20–45 °C are recommended for operating CORTECS Columns in order to enhance selectivity, lower solvent viscosity, and increase mass transfer rates. When operating at high pH, lower operating temperatures are recommended for longer column lifetime. Working at high temperatures (e.g., >70 °C) may also result in shorter column lifetimes.

Table 2. Buffer Recommendations for Using CORTECS Columns

Additive/Buffer	pK _a	Buffer Range	Volatility (±1 pH Unit)	Used for Mass Spec	Comments
TFA	0.3	—	Volatile	Yes	Ion pair additive, can suppress MS signal, used in the 0.02–0.1% range.
Acetic acid	4.76	—	Volatile	Yes	Maximum buffering obtained when used with ammonium acetate salt. Used in 0.1–1.0% range.
Formic acid	3.75	—	Volatile	Yes	Maximum buffering obtained when used with ammonium formate salt. Used in 0.1–1.0% range.
Acetate (NH ₄ CH ₃ CO ₂)	4.76	3.76–5.76	Volatile	Yes	Used in the 1–10 mM range. <i>Note: Sodium or potassium salts are not volatile.</i>
Formate (NH ₄ HCO ₂)	3.75	2.75–4.75	Volatile	Yes	Used in the 1–10 mM range. <i>Note: Sodium or potassium salts are not volatile.</i>
Phosphate 1	2.15	1.15–3.15	Non-volatile	No	Traditional low pH buffer, good UV transparency.
Phosphate 2	7.2	6.20–8.20	Non-volatile	No	Above pH 7, reduce temperature/concentration and use a guard column to maximize lifetime.
Phosphate 3	12.3	11.3–13.3	Non-volatile	No	Above pH 7, reduce temperature/concentration and use a guard column to maximize lifetime.
4-Methylmorpholine	~8.4	7.4–9.4	Volatile	Yes	Generally used at 10 mM or less.
Ammonia (NH ₄ OH)	9.2	8.2–10.2	Volatile	Yes	Used in the 5–10 mM range (for MS work keep source >150 °C). Adjust pH with ammonium hydroxide or acetic acid. Good buffering capacity at pH 10. <i>Note: Use ammonium bicarbonate (NH₄HCO₃), not ammonium carbonate ((NH₄)₂CO₃).</i>
Ammonium bicarbonate	10.3 (HCO ₃ ⁻)		Volatile	Yes	
	9.2 (NH ₄ ⁺)	8.2–11.3			
Ammonium (Acetate)	9.2	8.2–10.2	Volatile	Yes	Used in the 1–10 mM range.
Ammonium (Formate)	9.2	8.2–10.2	Volatile	Yes	Used in the 1–10 mM range.
Borate	9.2	8.2–10.2	Non-volatile	No	Reduce temperature/concentration and use a guard column to maximize lifetime.
CAPSO	9.7	8.7–10.7	Non-volatile	No	Zwitterionic buffer, compatible with acetonitrile, used in the 1–10 mM range. Low odor.
Glycine	2.4, 9.8	8.8–10.8	Non-volatile	No	Zwitterionic buffer, can give longer lifetimes than borate buffer.
1-Methylpiperidine	10.2	9.3–11.3	Volatile	Yes	Used in the 1–10 mM range.
CAPS	10.4	9.5–11.5	Non-volatile	No	Zwitterionic buffer, compatible with acetonitrile, used in the 1–10 mM range. Low odor.
Triethylamine (as acetate salt)	10.7	9.7–11.7	Volatile	Yes	Used in the 0.1–1.0% range. Volatile only when titrated with acetic acid (not hydrochloric or phosphoric). Used as ion-pair for DNA analysis at pH 7–9.
Pyrrolidine	11.3	10.3–12.3	Volatile	Yes	Mild buffer, gives long lifetime.

Note: Working at the extremes of pH, temperature, and/or pressure will result in shorter column lifetimes.

IV. COLUMN CLEANING, REGENERATING, AND STORAGE

a. Cleaning and Regeneration

Changes in peak shape, peak splitting, shoulders on the peak, shifts in retention, change in resolution, or increasing backpressure may indicate contamination of the column. Flushing with a neat organic solvent, taking care not to precipitate buffers, is usually sufficient to remove the contaminant. If the flushing procedure does not solve the problem, purge the column using the following cleaning and regeneration procedures.

Use the cleaning routine that matches the properties of the samples and/or what you believe is contaminating the column (see Table 3). Flush columns with 20-column volumes of

solvent. Increasing column temperature increases cleaning efficiency. If the column performance is poor after regenerating and cleaning, call your local Waters office for additional support.

Flush CORTECS HILIC columns with 50:50 acetonitrile:water to remove polar contaminants. If this flushing procedure does not solve the problem, purge the column with 5:95 acetonitrile:water.

Table 3. Recommended pH and Temperature Limits for CORTECS Columns

Name of column	Ligand type	Surface charge modification	End cap style	Carbon load	Ligand density	pH limits	Temp. limits
C ₁₈	Trifunctional C ₁₈	None	Proprietary	6.6%	2.7 μmol/m ²	2–8	45 °C
C ₁₈ +	Trifunctional C ₁₈	+	Proprietary	5.7%	2.4 μmol/m ²	2–8	45 °C
C ₈	Trifunctional C ₈	None	Proprietary	4.5%	3.4 μmol/m ²	2–8	45 °C
T3	Trifunctional C ₁₈	None	Proprietary	4.7%	1.6 μmol/m ²	2–8	45 °C
Shield RP18	Monofunctional Embedded Polar C ₁₈	None	Proprietary	6.4%	3.2 μmol/m ²	2–8	45 °C
Phenyl	Trifunctional phenyl	None	Proprietary	5.9%	3.2 μmol/m ²	2–8	45 °C
HILIC	None	None	None	Unbonded	n/a	1–5	45 °C

Table 4. Reversed-Phase Column Cleaning Sequence

Polar Samples	Non-polar Samples*	Proteinaceous Samples
1. Water	1. Isopropanol (or an appropriate isopropanol/water mixture**)	Option 1: Inject repeated aliquots of dimethylsulfoxide (DMSO)
2. Methanol	2. Tetrahydrofuran (THF)	Option 2: Gradient of 10% to 90% B where: A = 0.1% trifluoroacetic acid (TFA) in water, B = 0.1% trifluoroacetic acid (TFA) in acetonitrile (CH ₃ CN)
3. Tetrahydrofuran (THF)	3. Dichloromethane	
4. Methanol	4. Hexane	Option 3: Flush column with 7 M guanidine hydrochloride or 7 M urea
5. Water	5. Isopropanol (followed by an appropriate isopropanol/water mixture**)	
6. Mobile phase	6. Mobile phase	

* Prior to using THF or hexane, ensure your system is compatible with these solvents. THF or hexane should only be considered when the column cannot be cleaned by running neat, reversed-phase organic solvents such as acetonitrile. Reduce flow rate, lower operating temperatures, and limit system exposure to THF and/or hexane.

** Use low organic solvent content to avoid precipitating buffers.

b. Storage

For periods longer than four days at room temperature, store reversed-phase columns in 100% acetonitrile. For elevated temperature applications, store immediately after use in 100% acetonitrile for the best column lifetime. Do not store columns in buffered eluents. If the mobile phase contained a buffer salt, flush reversed-phase CORTECS Columns with 10-column volumes of HPLC grade water (see Table 1 for common column volumes) and replace with 100% acetonitrile for storage. Failure to perform this intermediate step could result in precipitation of the buffer salt in the column when 100% acetonitrile is introduced. Completely seal column to avoid evaporation and drying out of the bed.

For periods longer than four days, store CORTECS HILIC Columns in 95:5 acetonitrile:water. Do not store in buffered solvent. If the mobile phase contained a buffered salt, flush the column with 10-column volumes of 95:5 acetonitrile:water (see Table 1 for common column volumes).

Note: If a column has been run with a mobile phase that contains formate (e.g., ammonium formate, formic acid, etc.) and is then flushed with 100% acetonitrile, slightly longer equilibration times may be necessary when the column is re-installed and run again with a formate-containing mobile phase.

V. eCORD INTELLIGENT CHIP TECHNOLOGY

a. Introduction

The eCord Intelligent Chip provides the history of a column's performance throughout its lifetime. The eCord will be permanently attached to the column to assure that the column's performance history is maintained in the event that the column is moved from one instrument to another.

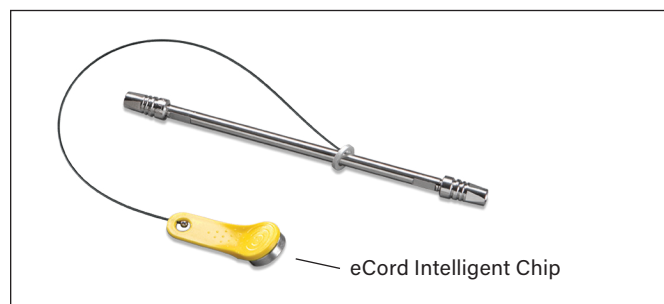


Figure 3. eCord Intelligent Chip.

At the time of manufacture, tracking, and quality control information will be downloaded to the eCord. Storing this information on the chip will eliminate the need for a paper Certificate of Analysis. Once the user installs the column, the software will automatically download key parameters into a column history file stored on the chip. In this manual, we explain how the eCord will provide a solution for easily tracking the history of the columns, reduce the frustration of paperwork trails, and give customers the reassurance that a well-performing column is installed onto their instruments.

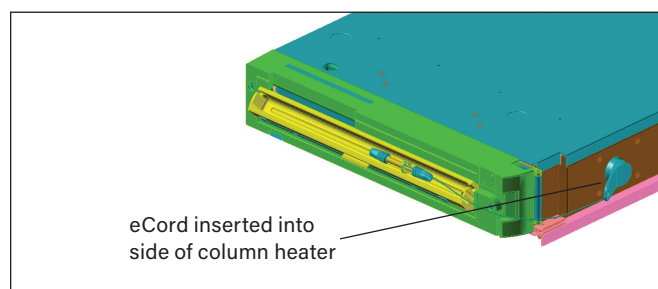


Figure 4. eCord inserted into side of column heater.

b. Installation

Install the column into the column heater. Plug the eCord into the side of the column heater. Once the eCord is inserted into the column heater the identification and overall column usage information will be available in Empower™ and MassLynx™ Software allowing the user to access column information on their desktop.

c. Manufacturing Information

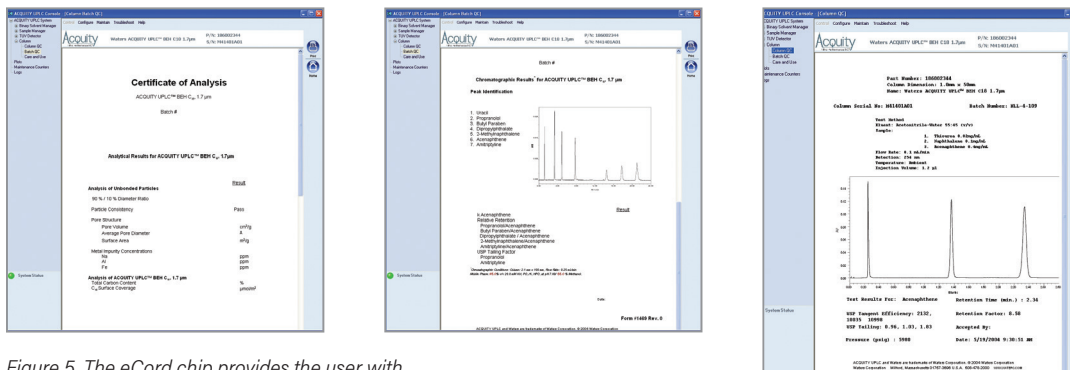


Figure 5. The eCord chip provides the user with an overview of the bulk material QC test results.

Figure 6. The eCord chip provides the user with QC test conditions and results on the column run by the manufacturer. The information includes mobile phases, running conditions, and analytes used to test the columns. In addition, the QC results and acceptance is placed onto the column.

d. Column Use Information

The eCord chip provides the customer with column use data. The top of the screen identifies the column including chemistry type, column dimensions and serial number. The overall column usage information includes the total number of samples, total number of injections, total sample sets, date of first injection, date of last injection, maximum pressure, and temperature. The information also details the column history by sample set including date started, sample set name, user name, system name, number of injections in the sample set, number of samples in the sample set, maximum pressure, and temperature in the sample set and if the column met basic system suitability requirements. Up to 50 sample sets can be stored on the eCord chip.

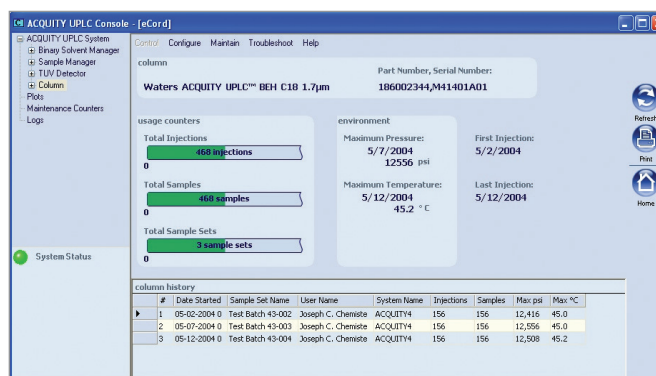


Figure 7. An example of column use information provided by the eCord chip.

VI. ADDITIONAL INFORMATION

a. Tips for Maximizing CORTECS Column Lifetimes

- To maximize CORTECS Column lifetime, pay close attention to:
 - Water quality (including water purification system)
 - Solvent quality
 - Mobile-phase preparation, storage, and age
 - Sample, buffer, and mobile-phase solubilities
 - Sample quality and preparation
- It is recommended to monitor your systems health by incorporating a quality control (QC) reference material into your work flow. (Reference 720004535EN)
- When problems arise, often only one improper practice must be changed.

4. Always remember to:

- Use in-line filter unit or, preferably, a VanGuard Pre-column.
- Discourage bacterial growth by minimizing the use of 100% aqueous mobile phases where possible.
- Change aqueous mobile phase every 24–48 hours (if 100% aqueous mobile phase use is required).
- Discard old 100% aqueous mobile phases every 24–48 hours to discourage bacterial growth.
- Add 5–10% organic modifier to mobile phase A and adjust gradient profile.
- Filter aqueous portions of mobile phase through 0.2 µm filter.
- Maintain your water purification system so that it is in good working order.

- Only use ultra pure water (18 megohm-cm) water and highest quality solvents possible. HPLC-grade water is not UPLC-grade water.
 - Consider sample preparation (e.g., solid-phase extraction, filtration, etc.).
5. Avoid (where possible):
- 100% aqueous mobile phases (if possible)
 - HPLC-grade bottled water
 - "Topping off" or adding "new" mobile phase to "old" mobile phase
 - Old aqueous mobile phases. Remember to rinse bottles thoroughly and prepare fresh every 24 to 48 hours
 - Using phosphate salt buffer in combination with high ACN concentrations (e.g., >70%) due to precipitation.
6. Don't assume a "bad" column is the culprit when high backpressure or split peaks are observed. Investigate cause of column failure by checking:
- Backpressure
 - Mobile phase(s), bacteria, precipitation, and/or samples
 - Peak splitting
 - Sample quality
 - Injection solvent strength
7. Remember, the diameter of ACQUITY columns (1.0, 2.1, and 3.0 mm I.D.) are often lower than that of a conventional HPLC column and, therefore, mobile phases last much longer. To reduce the chances of mobile-phase contamination or degradation, only prepare what you need for analysis or store excess bulk quantities in a refrigerated environment.
8. Mobile phase-related questions to ask:
- Am I using 100% aqueous mobile phases? Am I able to add a small amount of organic modifier to my mobile phase A?
 - Do I filter my aqueous mobile phases through 0.2 μm filters?
 - How old is my mobile phase? Do I label the bottle with the preparation date?
 - Do I "top off" or do I prepare fresh mobile phases every 24–48 hours?
 - What is the quality of my water? Has the quality recently changed? How is my water purification system working? When was it last serviced?
 - Am I working with pH 7 phosphate buffer (which is VERY susceptible to bacterial growth)?
9. Sample-related questions to ask:
- If I inject neat standards prepared in mobile phase do I observe these problems?
 - If I prepare my standards in water and prepare them like samples (e.g., SPE, filtration, etc.) do I still observe these problems?
 - Has the quality of my samples changed over time?

b. Getting Started with CORTECS HILIC Columns

1. Because CORTECS HILIC columns do not possess a bonded phase, the pH operating range is 1–5, and they can be operated at temperatures up to 45 °C.
2. As with any LC column, operating at the extremes of pH, pressures, and temperatures will result in decreased column lifetime.

Column Equilibration

1. When the column is first received, flush in 50% acetonitrile: 50% water with 10 mM final buffer concentration for 50 column volumes.
2. Equilibrate with 20-column volumes of initial mobile-phase conditions before making first injection.

3. If gradient conditions are used, equilibrate with 8–10 column volumes between injections.
4. Failure to appropriately equilibrate the column could result in drifting retention times.

Mobile-phase Considerations

1. Always maintain at least 3% polar solvent in the mobile phase or gradient (e.g., 3% aqueous/3% methanol or 2% aqueous/1% methanol, etc.). This ensures that the CORTECS particle is always hydrated.
2. Maintain at least 40% organic solvent (e.g., acetonitrile) in your mobile phase or gradient.
3. Avoid phosphate salt buffers to avoid precipitation in HILIC mobile phases. Phosphoric acid is okay.
4. Buffers such as ammonium formate or ammonium acetate will produce more reproducible results than additives such as formic acid or acetic acid. If an additive (e.g., formic acid, etc.) must be used instead of a buffer, use 0.2% (v:v) instead of 0.1%.
5. For best peak shape, maintain a buffer concentration of 10 mM in your mobile phase/gradient at all times.

Injection Solvents

1. If possible, injection solvents should be 95% acetonitrile. The polar solvent (*i.e.*, water, methanol, isopropanol) should be minimized to 25% of the total volume.
2. A generic injection solvent is 75:25 acetonitrile:methanol. This is a good compromise between analyte solubility and peak shape.
3. Avoid water and dimethylsulfoxide (DMSO) as injection solvents. These solvents will produce very poor peak shapes.
4. Exchange water or DMSO with acetonitrile by using reversed-phase solid-phase extraction (SPE). If this is not possible, dilute the water or DMSO with organic solvent.

Miscellaneous Tips

1. CORTECS HILIC Columns are designed to retain very polar bases. Acidic, neutral, and/or non-polar compounds will have limited retention.
2. Optimal flow rates for small (<200 daltons) very polar bases are in the 0.4 to 0.8 mL/min range.
3. As compared to Atlantis™ HILIC Silica HPLC Columns, the CORTECS HILIC Columns are approximately 20% less retentive for gradient analysis and 35–65% less retentive for isocratic analysis. This is due to the lower residual surface silanol concentration of the CORTECS particle.
4. In HILIC, it is important to remember that water is the strongest solvent. Therefore, it must be eliminated or minimized in the injection solvent.
5. For initial scouting conditions, run a gradient from 95% acetonitrile to 50% acetonitrile. If no retention occurs, run isocratically with 95:3:2 acetonitrile:methanol:aqueous buffer.
6. Alternate polar solvents such as methanol, acetone, or isopropanol can also be used in place of water to increase retention.
7. If using an ACQUITY UPLC and/or ACQUITY Premier System, the weak needle wash should closely match the % organic present in the initial mobile-phase conditions, otherwise, analyte peak shape or retention may suffer.
8. It is recommended to monitor your systems health by incorporating the HILIC Quality Control (QC) Reference Material into your work flow. (Reference [720004535EN](#)).
9. In HILIC mobile phases, phosphoric acid is okay.



VII. CAUTIONARY NOTE

Depending on the user's application, these products may be classified as hazardous following their use, and as such are intended to be used by professional laboratory personnel trained in the competent handling of such materials. Responsibility for the safe use and disposal of products rests entirely with the purchaser and user. The Safety Data Sheet (SDS) for this product is available at [waters.com/sds](https://www.waters.com/sds).

Waters

THE SCIENCE OF WHAT'S POSSIBLE.™

Waters, The Science of What's Possible, ACQUITY, CORTECS, UPLC, eCord, VanGuard, MaxPeak, Arc, Oasis, Sep-Pak, Empower, and MassLynx are trademarks of Waters Corporation. All other trademarks are the property of their respective owners.

© 2022 Waters Corporation. Produced in the U.S.A. December 2022 720004750EN KK-PDF

Waters Corporation
34 Maple Street
Milford, MA 01757 U.S.A.
T: 1 508 478 2000
F: 1 508 872 1990
www.waters.com