

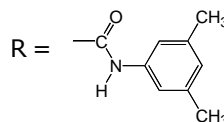
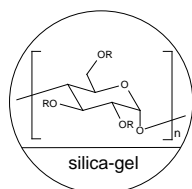
INSTRUCTION MANUAL FOR CHIRALPAK® AD-H

Please read this instruction sheet completely before using this column

Column Description

CHIRALPAK® AD-H

Amylose tris(3,5-dimethylphenylcarbamate)
coated on 5µm silica-gel.



Shipping solvent: n-Hexane / 2-propanol solvent mixture (90:10 v/v)

All columns have been pre-tested before packaging. Test parameters and results, as well as the Column Lot Number, are included on a separate (enclosed) page.

CAUTION

The entire HPLC system including the injector and the injection loop must be flushed with a solvent compatible with the column and its storage solvent prior to connecting. Many of the solvents commonly used in HPLC eluents such as acetone, chloroform, DMF, dimethylsulfoxide, ethyl acetate, methylene chloride and THF may DESTROY the chiral stationary phase if they are present, even in residual quantities, in the system.

If an auto-sampler is used, then the solvent employed to flush this unit between injections should also be changed and the relevant solvent lines flushed.

Operating Conditions

	150 x 2.1 mm i.d. Analytical columns	150 x 4.6 mm i.d. 250 x 4.6 mm i.d. Analytical columns	250 x 10 mm i.d. Semi-prep. columns	250 x 20 mm i.d. Semi-prep. columns
Flow rate direction	As indicated on the column label			
Typical Flow rate ①	~ 0.1 - 0.2 ml/min	~ 1 ml/min	~ 5 ml/min	~ 18 ml/min
Pressure limitation	Should be maintained < 300 Bar (4350 psi) for maximum column life <i>Adapt flow rates to column size.</i>			
Temperature	0 to 40°C			

① The maximum flow rate depends on the mobile phase viscosity (mobile phase composition), and should be adjusted in accordance with the pressure upper's limit (i.e. 300 Bar).

Operating Procedure

Please contact Chiral Technologies, Inc. for further assistance before trying any solvents not mentioned below.

A - Mobile Phases

	Alkane ^① / 2-propanol ^②	Alkane ^① / Ethanol ^②	Alkane ^① / MeOH ^③	MeOH ^④ + ^⑤	CH ₃ CN ^⑥ <u>No Alkane at all</u>
CHIRALPAK® AD-H	100/0 to 0/100	100/0 to 0/100	100/0 to 85/15	0 to 100% EtOH or IPA in MeOH <hr/> 0-15% CH ₃ CN ^⑥ in MeOH	0 to 100% IPA in CH ₃ CN <hr/> 0 to 15% ^⑥ MeOH or EtOH in CH ₃ CN

- ① Alkane: n-hexane or iso-hexane or n-heptane. Some small selectivity differences may sometimes be found.
- ②
 - The retention is generally shorter with Ethanol than with 2-propanol.
 - The retention is generally shorter with higher alcohol contents.
 - The use of other alcohols such as 1-propanol, 1-BuOH, 2-BuOH etc...is possible, but effectiveness cannot be guaranteed.
- ③ Due to limited miscibility of MeOH in Alkane, it is necessary to add an appropriate volume of EtOH together with MeOH in order to obtain homogenous solvent mixtures.
A maximum of 5% MeOH in n-hexane only may be used without adding EtOH.
- ④ Ideal starting conditions: MeOH/EtOH 50:50 (v/v) when alcohol mixtures are required
- ⑤ The use of polar solvents as 100% methanol or 100% acetonitrile is possible with CHIRALPAK® AD-H columns. Nevertheless once the column is transferred to a polar mode **it should be dedicated to this specific application.**

To safely transfer the column from hexane to methanol or acetonitrile or between different polar solvents, **it is strongly recommended to use 100% 2-propanol as a transition mobile phase.**

- ⑥
 - Column particularly efficient in this range when such solvent mixtures are employed.
 - Other alcohols such as 1-propanol, 1-BuOH, 2-BuOH etc...can also be used, but effectiveness cannot be guaranteed. Do not use mobile phases containing more than 15% of these alcohols.

B – Additives

For basic samples or acidic samples, it is necessary to add an additive into the mobile phase in order to achieve the chiral separation:

- ⑦ For primary amines mainly
- ⑧ For primary amino alcohols mainly

Basic Samples Require Basic modifiers	Acidic Samples Require Acidic modifiers
DEA Butyl amine ^⑦ Ethanol amine ^⑧	TFA CH ₃ COOH HCOOH
<hr/> < 0.5% Typically 0.1%	<hr/> < 0.5% Typically 0.1%

Column Care / Maintenance

- ❑ The use of a guard cartridge is highly recommended for maximum column life.
- ❑ Samples should be dissolved in the mobile phase and should be filtered through a membrane filter of approximately 0.5µm porosity.
- ❑ For alkane containing mobile phases, flush the column with Storage Solvent (Hexane / 2-propanol 9:1) when stored for more than one week.
- ❑ For columns dedicated to polar solvents, flush the column with the regular mobile phase **without the additive.**

☞ When washing is required, flush pure Ethanol for 3 hours.
(Columns used with alkane/alcohol mobile phase only).

🔥* Before flushing with 100% Ethanol use 100% 2-propanol as a transition mobile phase.

Important Notice

⇒ STRONGLY BASIC solvent modifiers or sample solutions MUST BE AVOIDED, because they are likely to damage the silica gel used in this column.

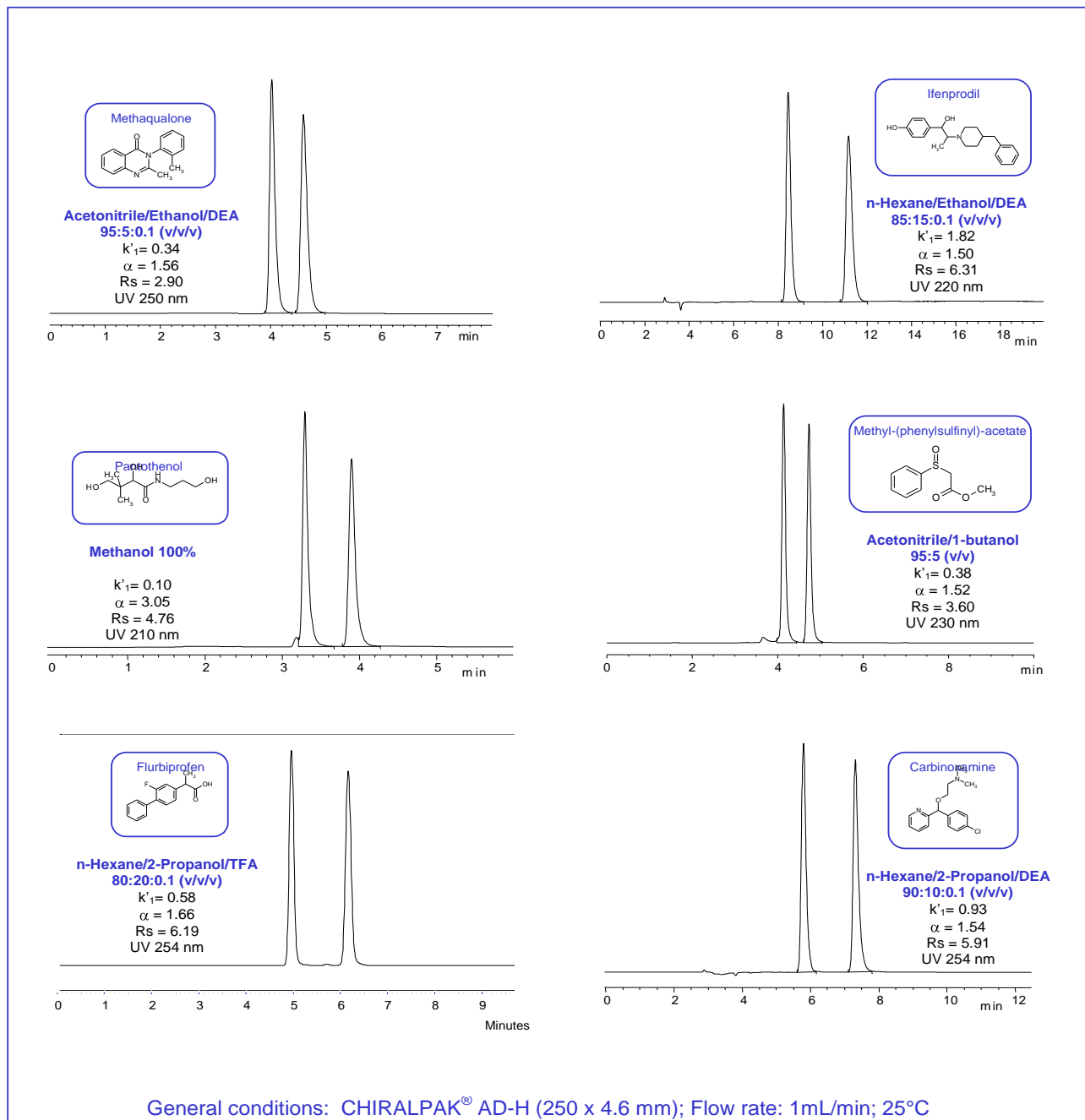
Operating this column in accordance with the guidelines outlined here will result in a long column life.

⇒ If you have any questions about the use of this column, or encounter a problem, please email questions@chiraltech.com or call 800-6-CHIRAL for assistance.

Part Number	Name	Particle Size	Internal Diameter	Column Length	Product Type
19311	CHIRALPAK AD-H	5	4.0	10	Guard Cartridges (3)
19324	CHIRALPAK AD-H	5	4.6	150	Analytical
19325	CHIRALPAK AD-H	5	4.6	250	Analytical
19335	CHIRALPAK AD-H	5	10	250	Semi-Prep
19345	CHIRALPAK AD-H	5	20	250	Semi-Prep
19375	CHIRALPAK AD-H	5	30	250	Semi-Prep
19394	CHIRALPAK AD-H	5	2.1	150	Analytical
19422	CHIRALPAK AD-H	5	4.6	50	SFC Guard
19423	CHIRALPAK AD-H	5	4.6	100	SFC Screening Column
19435	CHIRALPAK AD-H	5	10	250	SFC Semi-Prep
19445	CHIRALPAK AD-H	5	21	250	SFC Semi-Prep
19455	CHIRALPAK AD-H	5	50	250	SFC Preparative
19475	CHIRALPAK AD-H	5	30	250	SFC Semi-Prep

CHIRALPAK[®] AD-H

Analytical HPLC applications



CHIRALCEL, CHIRALPAK and CROWNPAK are registered trademarks of DAICEL CORPORATION